

FEATURES

- 2 isolate, 1 equalize & 1 vent valves (DIN 19213 design)

APPLICATION

- Isolation & venting of gauges, switches & transmitters
- High pressure line shut off
- Liquid & gas services

Direct / Remote Mounting

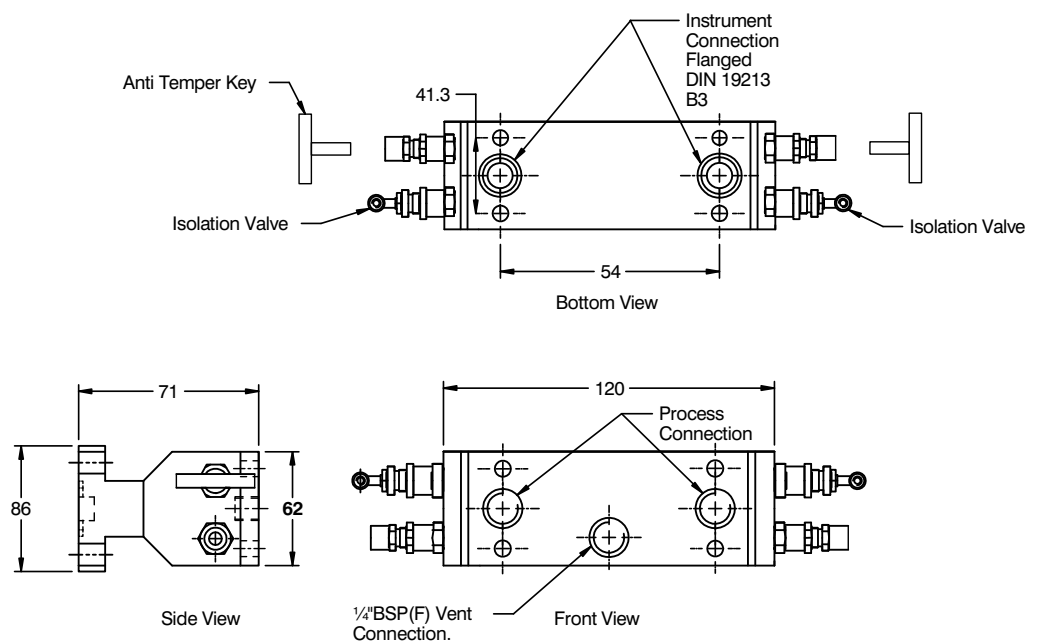


STANDARD SPECIFICATIONS

Mounting	:	Direct
Pattern	:	1
Wetted parts	:	AISI 316 SS
Instrument connection	:	Flange (DIN 19213 Form B1)
Stem packing	:	PTFE
Process connection	:	1/2" NPT (F) x 2 Nos
Stem	:	Conical metal tip
Max. working pressure	:	413.7 bar (6000 psi)
Max. working temperature	:	240°C
"T" bar handle	:	AISI 304 SS
Drain port	:	1/4" NPT (F), plugged

DIMENSIONAL DRAWING

Direct mount - Pattern 1



All dimensions are in mm.

ORDERING CODES

1. MOUNTING

D Direct

D

2. TYPE

1 Pattern 1

1

3. WETTED PARTS

MB Carbon Steel / ASTM A105
MC AISI 304 SS
MF AISI 316 SS
MG AISI 316L SS
MM Monel 400
MN Monel K-500
MO Hastelloy C-276

MF

4. INSTRUMENT CONNECTION

FL5 Flange (DIN 19213 Form B1)

FL5

5. STEM PACKING

P PTFE
G Grafoil

P

6. PROCESS CONNECTION

11N 1/8" NPT (M)	12N 1/4" NPT (M)
13N 3/8" NPT (M)	14N 1/2" NPT (M)
11B 1/8" BSP (M)	12B 1/4" BSP (M)
13B 3/8" BSP (M)	14B 1/2" BSP (M)
01N 1/8" NPT (F)	02N 1/4" NPT (F)
03N 3/8" NPT (F)	04N 1/2" NPT (F)
01B 1/8" BSP (F)	02B 1/4" BSP (F)
03B 3/8" BSP (F)	04B 1/2" BSP (F)
1SW 1/8" Socket-Weld	
2SW 1/4" Socket-Weld	
4SW 1/2" Socket-Weld	
5SW 3/4" Socket-Weld	

04N

7. OTHER OPTIONS

XY Circular Handle
TN Tested to NACE standards
TO Certification for Oxygen service
TM Material test certificate 2.2
TH Hydro test certificate
TC Material test certificate 3.1
XL Marking by laser

XL

Ordering Example : M104-D-1-MF-F5-P-04N-XL

APPLICABLE ACCESSORIES

A502 Mounting Bracket, three/five valve manifold
A506 Mounting bolts
A507 Ring for flanged seal
A508 Sealing gasket

NOTES:

1. Other connections are available, please contact factory for details.
2. Valve stem dust covers shall be identified with color codes according to their function as Blue = ISOLATE, Green = EQUALIZE & Red = DRAIN / VENT.
3. For option "F5 = Flange (DIN 19213 Form B1)", the CC distance shall be 54 mm.